

Trout Creek

BIBLE CAMP



Volunteer Staff Housing Project

Helping people love God with all their life!

Trout Creek Bible Camp uses an outdoor environment and their facilities for evangelism and discipleship, focusing primarily on children and youth through Christ-centered relationships and fun activities.



MISSION



Trout Creek plays a critical role in helping our partner churches to reach unchurched youth.

Parents of our staff and volunteers have observed the transformational effect that summer service has had on their lives.

3,100 campers
100 volunteer summer staff
20 retreat groups
2,350 guests

which equals

**5,550 people impacted
annually by TCBC**

IMPACT

A small, rustic wooden cabin with a steep gabled roof. The lower portion of the cabin is clad in dark red vertical siding, while the upper portion is white horizontal siding. A dark blue door with a small window and red curtains is the central feature. To the left of the door is a small white sign with the number '20'. To the right of the door is a white-framed window with multiple panes. The cabin is surrounded by large, moss-covered trees in a dense forest. The ground is covered in fallen leaves and moss.

BUILDING PROJECTS

- ① Seven new volunteer staff cabins
- ② Summer program office
- ③ New urgent care facility
- ④ Remodel VIP special guest cabin
- ⑤ New laundry facility

Our focus is to improve the buildings & living conditions for volunteer staff. This will help us fulfill our mission by:


- ① Attracting quality volunteer staff for our highly relational ministry.
- ② Enhancing our opportunities for expanded programing.

The overall goal of this project is to give Trout Creek Bible Camp the updated facilities it needs to serve the next generation of future campers and guests.



This is based on the conviction that there will be a continuous need for the Bible-based teaching and life-changing experiences that Trout Creek has to offer.

BUILDING PROJECT COSTS



7 - Volunteer Staff Cabins	\$420,000 (\$60,000 each)
1 - Program Office	\$ 60,000
1 - Urgent Care Facility	\$160,000
1 - VIP Guest Cabin	\$ 25,000
1 - Laundry Facility	\$ 85,000
<hr/>	
TOTAL	\$ 750,000



The completion of this project will enhance our mission by ensuring that our summer staff, nurse, and special guests are well taken care of during the summer while they serve the campers and expand our ministry and program opportunities.

“My home away from home. Such a great experience serving God & seeing campers grow closer to Christ.” — TCBC staff

“Thank you Trout Creek Bible Camp for taking such good care of our daughter and giving her memories to last a lifetime! About 20 minutes after leaving she was asking to sign up for next year!” — Parent of Camper



“In addition to their excellent summer camps, we recently were at Trout Creek for a weekend Women’s Retreat. They made sure we had everything we needed, the food was great, the location is beautiful.” — Women’s Retreat Leader

TESTIMONIALS

A photograph of a winding asphalt road through a dense forest. Sunlight filters through the trees, creating a bright, hazy glow in the center of the image. The road curves to the left, and the surrounding trees are lush and green.

Follow the winding country road to a place hidden among the trees,

where children's hearts are introduced to our Creator. Where the Lord is known, and shared, and where children's hearts grow in the grace and knowledge of the One who created them to know Him, and to sing His praises.

And the children aren't the only ones whose *hearts are touched by the Lord at this place among the trees.*

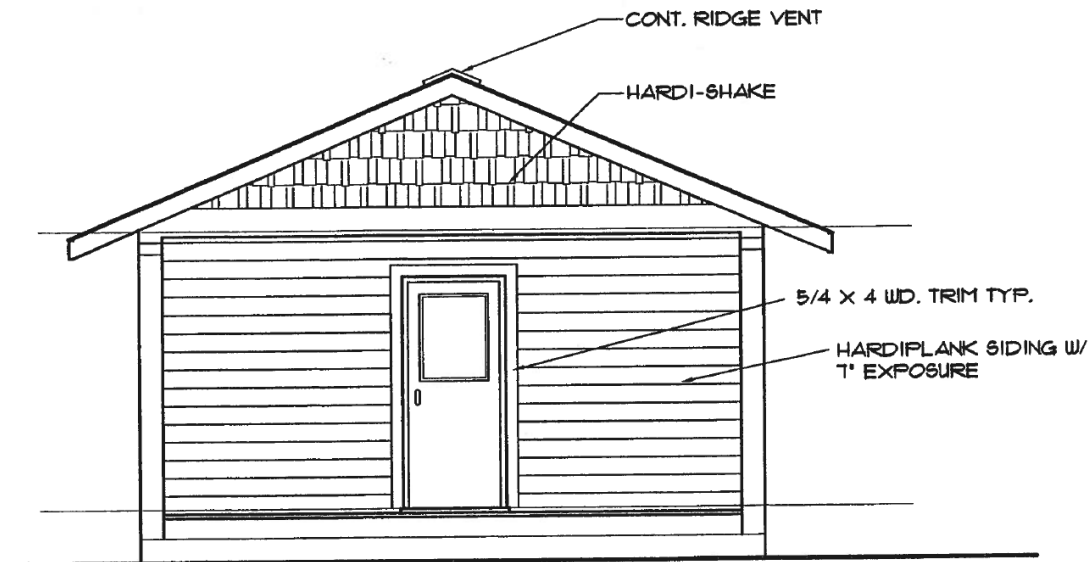
The staff who volunteer their summers there are also impacted by the call of God to be servants of Jesus in many different ways. And in their obedience to that call, they are blessed with friendships that will last a lifetime, and by the knowledge that they have impacted the lives of many who have made the decision to follow Christ.

No task is too small ... the Lord sees it all, and uses every task at this place that is done for Him. I have seen this impact first hand in the hearts and minds of my sons as they have worked at this wonderful place. I have seen their growth in the Lord in their obedience to go where He sends them, and *I am thankful for this wonderful place hidden among the trees called ...*

TROUT CREEK
BIBLE CAMP

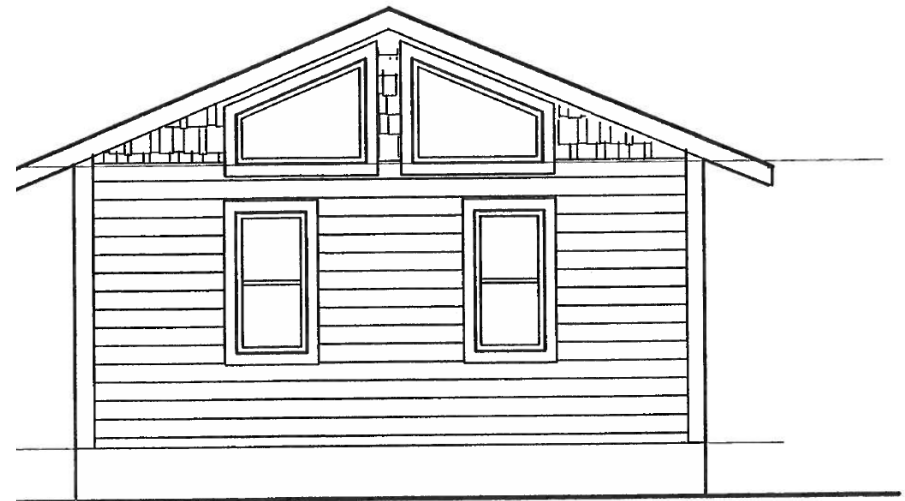
Staff Housing

EXTERIOR VIEW



FRONT ELEVATION

SCALE: 1/4"=1'-0"



REAR ELEVATION

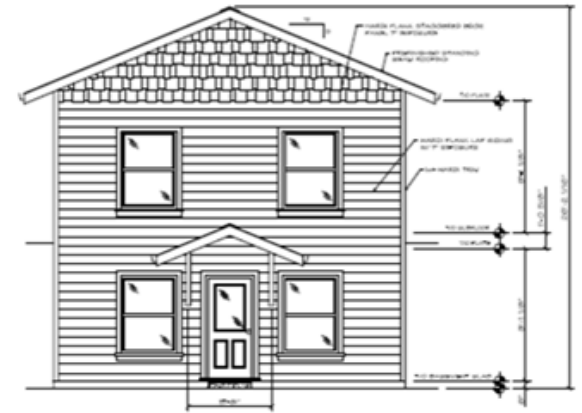
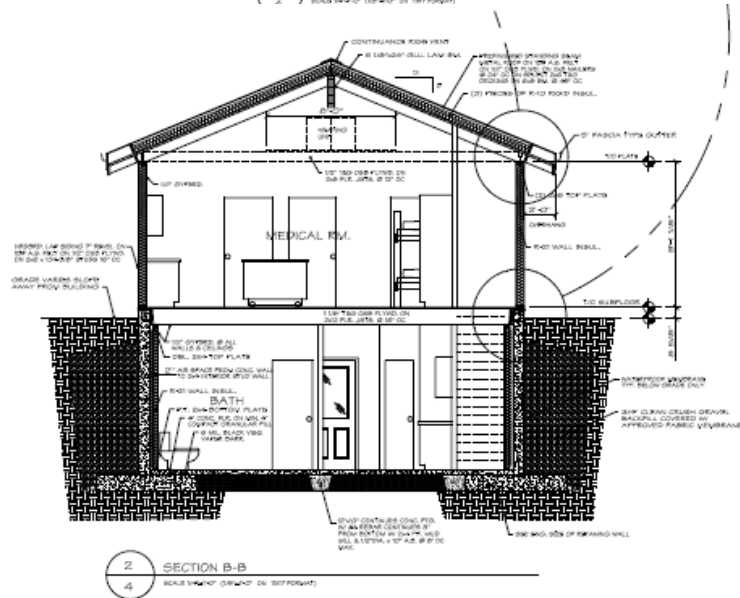
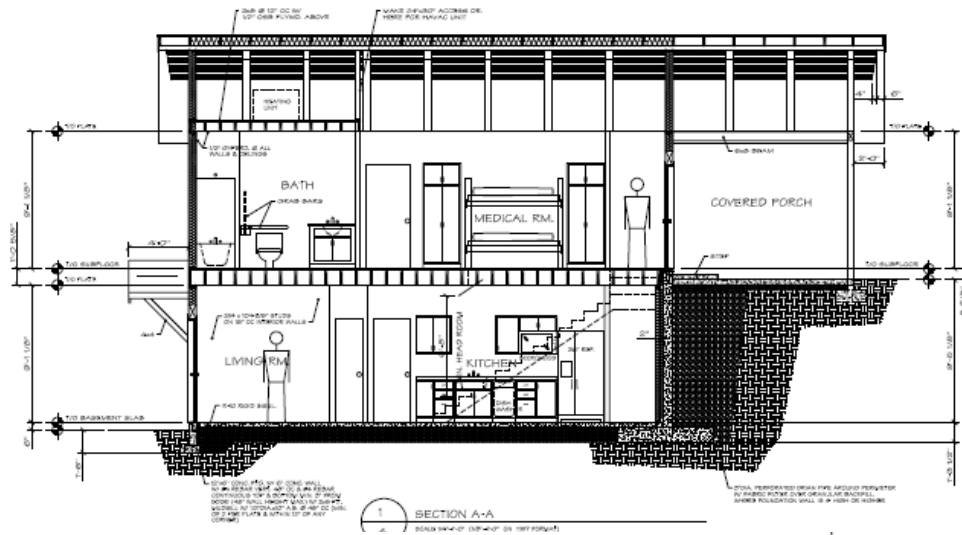
SCALE: 1/4"=1'-0"

Staff
Housing
INTERIOR VIEW

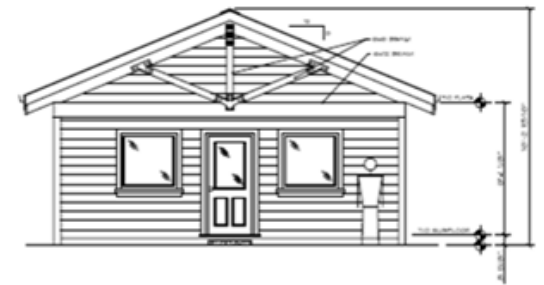


Nurse's Cabin

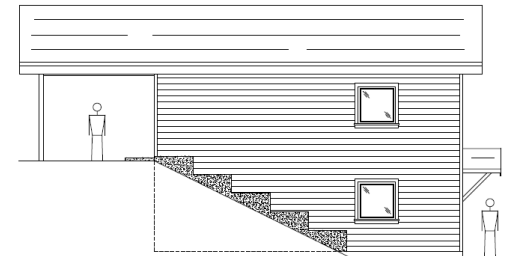
EXTERIOR VIEW



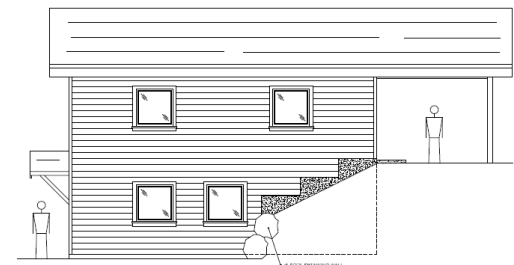
3 REAR ELEV. VIEW
BUILDING ELEVATION (1/4\"/>



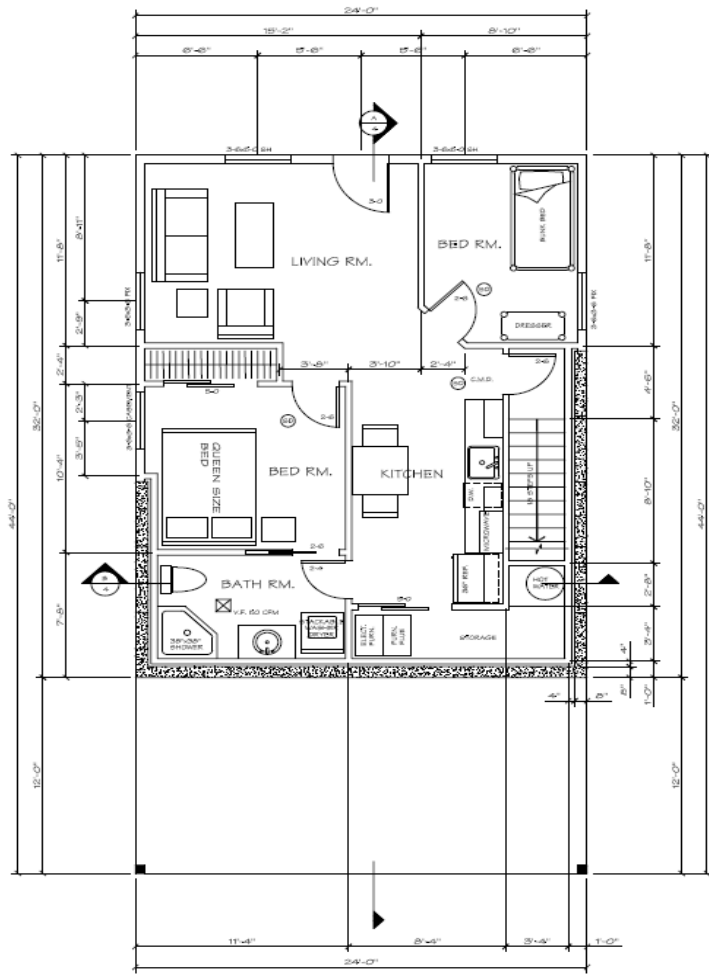
4 FRONT ELEV. VIEW
BUILDING ELEVATION (1/4\"/>



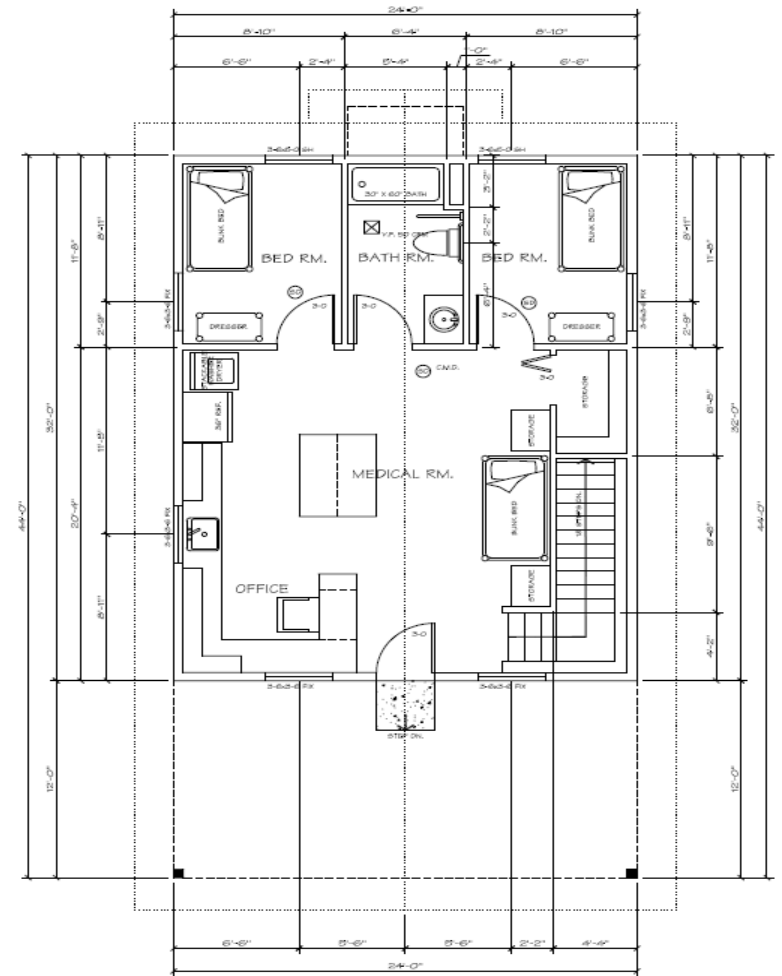
1 RIGHT SIDE ELEV. VIEW
BUILDING ELEVATION (1/4\"/>



2 LEFT SIDE ELEV. VIEW
BUILDING ELEVATION (1/4\"/>



1 LOWER FLOOR PLAN VIEW
2 SCALE 1/8"=1'-0" (1/8"=1'-0" ON 1/8" PAPER)

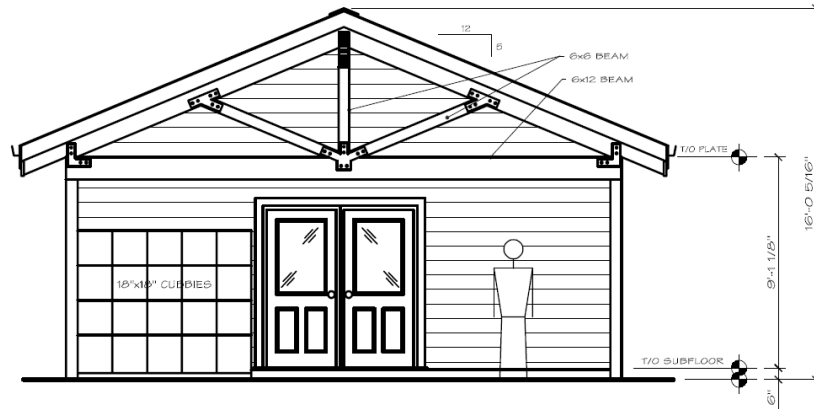


2 MAIN FLOOR PLAN VIEW
3 SCALE 1/8"=1'-0" (1/8"=1'-0" ON 1/8" PAPER)

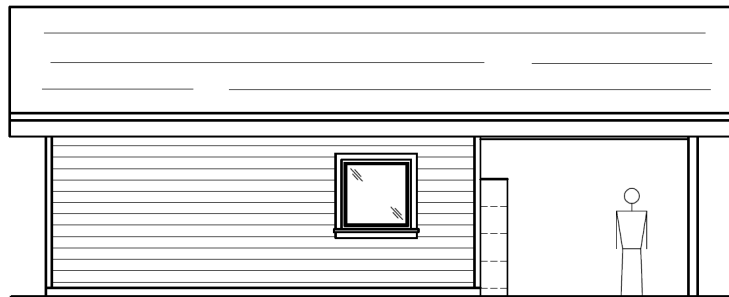
Nurse's Cabin
INTERIOR VIEW

Laundry Cabin

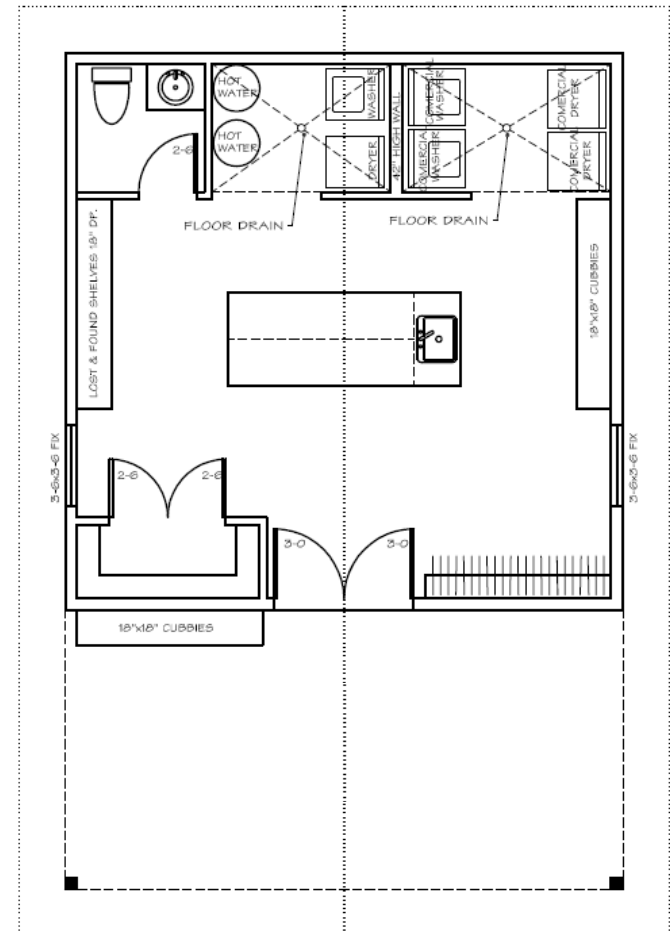
EXTERIOR VIEW



4 FRONT ELEV. VIEW
1 SCALE 1/4"=1'-0" (1/8"=1'-0" ON 11X17 FORMAT)



1 LEFT SIDE ELEV. VIEW
1 SCALE 1/4"=1'-0" (1/8"=1'-0" ON 11X17 FORMAT)



1 MAIN FLOOR PLAN VIEW
1 SCALE 1/4"=1'-0" (1/8"=1'-0" ON 11X17 FORMAT)